

# ТАНЦОВА СПОРТСКА ФЕДЕРАЦИЈА НА МАКЕДОНИЈА



# Dress regulations



# Dress regulations

Appendix WDSF Dress Regulations

**These Regulations are part of the WDSF Competitions Rules by reference in Rule C.6**

## **Explanation for Men's dress regulation:**

Dress shirt: wing collars may not be worn. Bow ties may not be worn.

## **Explanation for Woman's dress regulation:**

If a black one-piece dress is worn, a black jacket is mandatory, but then wearing a white blouse is not mandatory. Women may wear a necktie like men. The scarf must be worn around the neck. The WDSF scarf may be shortened if desired providing, that shortening does not interfere with or alter the intended design and appearance of the scarf. Long evening dresses may not be worn.

A white shirt for ladies in the shape and customary cut of a "Ladies' Top" or "T-Shirt" fulfils the requirement of a "blouse" in these new Rules if such a shirt is worn with a black jacket and WDSF Scarf.

The black jacket must have the shape of a business suit, e.g. a blazer. Casual dress jackets or improvisations to jackets (e.g. with rolled up sleeves) may not be worn.

**These Regulations are part of the WDSF Competition Rules by reference in Rule E.10.**

## **Authority and Applicability**

These Dress Regulations apply to all competitions granted by WDSF and according to the decision of the WDSF Annual General Meeting, form part of the competition rules of all WDSF Member bodies provided always that WDSF Member bodies may impose additional dress restrictions at their own discretion for national non-WDSF-named events.

The WDSF Presidium retains the authority to impose specific additional or general Dress restrictions or otherwise amend or allow exemptions, for specific events.

## **GENERAL**

1. Female athletes may not wear shorts, culottes or leotards alone but they can be worn with a skirt. Female Athletes must wear a skirt, dress or long trousers. Skirts and dresses must create Characteristic shape for each discipline (ST and LA) (shape area). In Standard Dress the lady's or girl's dress must have a long skirt which at minimum covers both her knees; if the skirt is split it must not be split higher than 10 cm above the knee. In Latin Dress the lady's or girl's dress must have a skirt made of fabric, fringe, feathers, beads or any other suitable material, and can be split or open on the sides, provided always that the skirt must completely cover the panties in front and in the back when standing still. If the skirt is made of net fabric, it must be lined with transparent or non transparent materials.

2. For specific rules for Juvenile girls see appendix 2 Juvenile Female Dress.
3. An athlete's costume must cover the intimate parts of that athlete's body ("the intimacy area").
4. A lady's or girl's dress and makeup must be appropriate for her age and the level of competition which is being danced.
5. In order to present a more modern and up-to-date image of DanceSport, a suit jacket with collared shirt and tie, or a vest with collared shirt and tie is recommended for the Junior II, Youth, Adult and Senior age groups.
6. Athletes may not use religious symbols as decoration or decoration jewellery but may use religious symbols as part of their personal jewellery.
7. The Chairperson has full authority to require any athlete to remove an item of jewellery or dress at any time if in the Chairperson's opinion that the item of jewellery or dress poses a potential danger to that athlete or to other competitors.
8. An athlete may compete wearing a costume which is required in a lower category.
9. The Chairperson may suspend from competition any athlete who fails to comply with these guidelines or fails to comply with the Chairperson's directions at a competition, and may direct the Scrutineer not to record the marks given to such an athlete in any competition in which the athlete fails so to comply.

### **Good Taste Rule**

Any use of material or colour or construction or other contrivance that gives the appearance of non compliance with these dress rules, even though there is no breach of the literal wording of these rules, will be a breach of these rules if so determined by the Chairperson of Adjudicators.

### **SANCTIONS**

If a couple is not dressed in accordance with this Dress Regulation and receives a warning from the Chairperson of adjudicators, they must comply with the regulation or face disqualification **IMMEDIATELY BY THE CHAIRPERSON or the WDSF Sports Director**, if present. The Presidium can impose additional sanctions including suspension from competitions for repeat offenders.

### **DEFINITIONS OF TERMS**

**No restriction (NR)** – there are no restrictions in this matter

**Not allowed (NA), Only allowed (OA),**

**Intimacy area (IA)** – body zones, which must be covered by non transparent materials or transparent materials lined with non transparent materials. If skin colour is used in the IA of an athlete's costume, it must be SwD.

### **Rules**

#### **For the Female partner:**

- tangas are NA.
- skin colours panties are NA.
- Breasts **must** be covered
- the distance between bra cups **must** be **less than 5 cm**.

**Shape area (SA)** – minimum area which **must** be covered. Transparent materials are allowed in these areas, any colour is allowed.

**Basic material – creates shape of the dress**

- with light effects (metallic, glitter, sequins, ...)
- without light effects

**Decoration – anything fixed on the basic material, hair, skin:**

- with light effects (rhinestones, sequins, beads, pearls, ...)
- without light effects (feathers, flowers, bows, fringe, lace applications, ribbons, ...)

Tie clips, studs, cufflinks, belt-buckles and personal jewellery are not defined as decorations.

**Hip Line (HL)** – panties top line (height)

= straight horizontal line, the top of the cleft or line between buttocks muscles (intergluteal line) **must not** be visible.

**Panty Line (PL)** – panties bottom line (height)

- o back side – whole buttocks are covered
- o in the front – follows line between flexed leg and body

**Leg cut / allowed open area on the side**

At least 5 cm of height between HL and PL must be covered with any of the following:

- Transparent material lined with non transparent material
- SwD

The 5 cm may be in any shape (e.g. square, diagonal, curved) and in any part of the area between HL and PL.

**Man's Top Opening Point (TOP)** – point, to which top or shirt can be opened

= centre of the belt buckle or centre of the trousers top line

**Colours**

- **black only ( Bo )**

- black (B) – means black and midnight blue
- white (W)

- **skin colour (S)** the same colour as the dancer's skin during the competition (with tan)

- **skin colour with decoration (SwD)**

- **any colour (C)** – any colour including mixed colours

- **any colour except skin colour (CnS)**

- any colour except black colour (CnB)

- **one colour except skin colour (C1nS)**

- **one colour except skin colour or black colour (C1nS/B)**




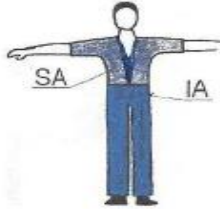
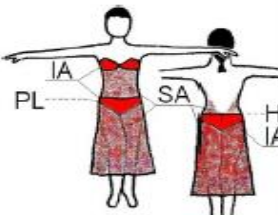
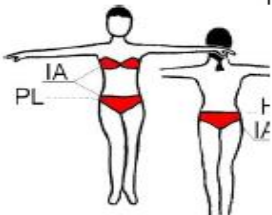
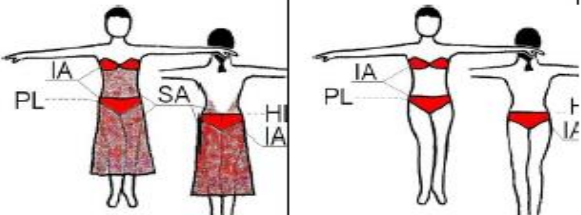
**Long Sleeves/ed (LS)** – length to the wrist, rolled up sleeves are **NA**

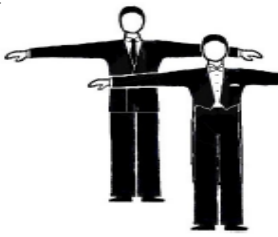
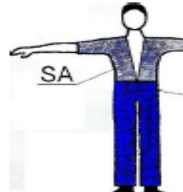
**Make-up** – includes face make-up, artificial tan, nail polish, artificial nails, and artificial eye lashes.

**Decoration jewellery** – jewellery designed to be a part of a dance dress

**Personal jewellery** – jewellery that is intended for everyday personal use. If used at competitions, use at your own risk.

# 1. DANCE DRESS – Only Allowed

Partner Disc.	Male		Female	
	ST	LA	ST	LA
Juvenile	<p>W LS shirt or W/Bo LS polo neck Bo trousers/satin side stripe allowed Bo tie/bow tie Bo socks</p>  <p>cuts and details – see appendix I</p>		<p>W blouse leotard or T shirt Bo skirt</p> <p>simple C1nS/B dress + panties</p> <p>C1nS/B leotard with same colour skirt attached</p>  <p>cuts and details – see appendix II</p>	
Junior I	<p>W LS shirt or W/Bo LS polo neck top Bo vest optional Bo trousers W bow tie to be worn with wing collared shirt B tie to be worn with plain shirt Bo socks</p> 	<p>C shirt/top (tucked in or outside)TOP-breastbone CnS trousers</p> 	<p>Competition dress JI –CnS others – C</p> 	<p>Competition dress JI –CnS others – C</p> 
Junior II Youth Adult Senior	<p>B Jacket suit (B trousers) B jacket W shirt B tie Or W tail shirt W bow tie)</p>	<p>B Tail suit (B trousers) B tails W waistcoat W tail shirt W bow tie)</p>	<p>C Shirt/Top CnS trousers</p> 	

		<p>Two piece dresses NA</p>	<p>Two piece dresses are allowed, but the top must not be a bikini top only</p>
---	---	-----------------------------	---

# 2. DECORATIONS, LIGHT EFFECTS

Partner Disc.	Male		Female	
	ST	LA	ST	LA
Juv	<p>Any decorations – NA Basic materials with light effects - NA</p>		<p>Any decorations – NA Basic materials with light effects - NA</p>	
Jun I			<p>Decoration with light effects – NA (Decoration without light effects is allowed). Basic materials with light effects – NA</p>	
Jun II – Sen	NR			

### 3. SHOES, SOCKS, TIGHTS

Partner Disc.	Male		Female	
	ST	LA	ST	LA
Juv	Heel: may be max 2,5 cm B socks must be worn Shoes: black only (Bo)		Heel: block, may be max 3,5cm C short socks are allowed Tights: skin colour - <b>OA</b> , mesh – <b>NA</b> Shoes: any colour (c ) included material with light effects (metallic, glitter,...), roller hook buckle, rhinestone buckles are allowed if they are used to buckle the shoes, not as a decoration.	
Jun I	Heel: max 2,5 cm B socks must be worn	Heel: max 3,5 cm B socks must be worn	Heel: may be max 5 cm short socks are allowed tights: mesh - <b>NA</b>	
Jun II – Sen	<b>NR</b>	<b>NR</b>	<b>NR</b>	

### 4. HAIRSTYLES

Partner Disc.	Male		Female	
	ST	LA	ST	LA
Juv	If the hair is long it must be worn in a pony tail		Decoration, artificial hair parts and coloured hairspray - <b>NA</b>	
Jun I			Decoration with light effects and coloured hairspray – <b>NA</b> (Decoration without light effects are allowed)	
Jun II			<b>NR</b>	

### 5. MAKE-UP

Partner Disc.	Male		Female	
	ST	LA	ST	LA
Juv, Jun I	Make-up - <b>NA</b>			
Jun II – Sen	<b>NR</b>			

### 6. DECORATION JEWELLERY (not personal jewellery)

Partner Disc.	Male		Female	
	ST	LA	ST	LA
Juv	Decoration jewellery - <b>NA</b>			
Jun I	Decoration jewellery with light effects – <b>NA</b> (Decoration jewellery without light effects are allowed)			
Jun II – Sen	<b>NR</b>			

## Appendix 1: Juvenile Male Dress

### Top

- W plain long sleeved shirt or W/Bo long sleeved polo neck top
- shiny or patterned materials - NA
- shirt wing collar - NA
- rolled up sleeves -NA
- must be tucked in



### Trousers

- shiny or patterned materials - NA
- side satin stripe allowed

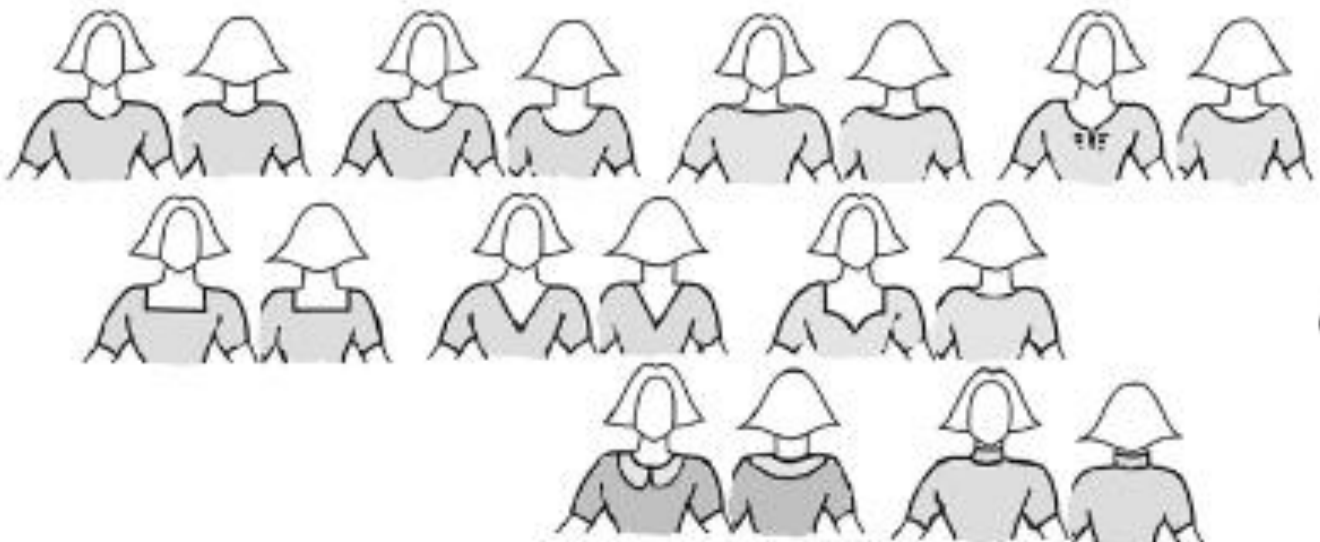
## Appendix 2: Juvenile Female Dress

Combination of different materials in the same colour is allowed. If transparent (see through) materials are used, they must be lined with a non-transparent material in the same colour. Sleeves may be transparent. Draping and pleating is allowed. Buttons in colour of the dress and fabric covered buttons are allowed if they are used to button the dress, not as a decoration.

Small tear shaped opening on the back closed at the neck with a button or hook may be used, not longer than 15cm and not wider than 5 cm.

The two new skirt designs (interest and godets) – the volume of the skirt must not exceed 2 full circles – 4 half circles insert or up to 8 quarter circle inserts.

### A. Necklines – allowed cuts, others - NA:



**B. Sleeves – allowed cuts, others - NA:**



**C. Skirts:**

- plain or pleated, made of minimum 1 to maximum 3 half circles - **OA**, one simple circular underskirt allowed, bigger underskirt - **NA**.
- frills on the skirt or the underskirt, boning, soft boning or fishing line used in the hem of the skirt – **NA**
- length **must not** be more than 10 cm above the knee and not longer than just below the kneecap.
- allowed cuts, others - **NA**:



1. new styles that are allowed



**Examples:**

